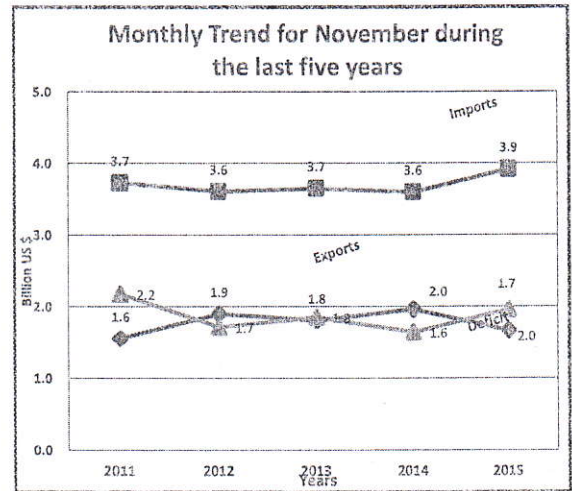
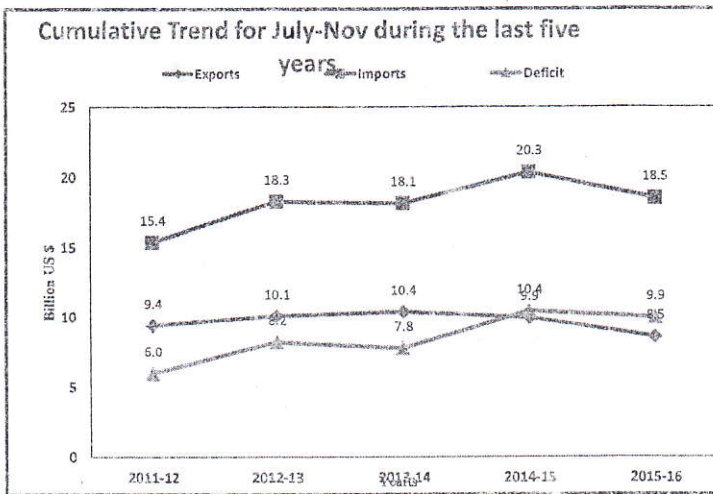


TRADE STATISTICS OF FY 2015-16 (UP TO NOVEMBER, 2015)

Value in Billion Rupees/US\$

Series	Currency	Oct	Nov	% Change in Nov,15 over Oct, 15	Nov		% Change in Nov,15 over Nov,14	July-Nov		% Change in July-Nov,2015-16 /July-Nov, 2014-15
		2015	2015		2014	2015 *		2014-15	2015-16 *	
EXPORTS	Rs.	180.653	175.123	-3.06	199.310	175.123	-12.14	1002.488	885.023	-11.72
	US\$	1.729	1.662	-3.88	1.958	1.662	-15.12	9.909	8.534	-13.88
IMPORTS	Rs.	410.184	412.688	0.61	366.215	412.688	12.69	2055.957	1915.608	-6.83
	US\$	3.926	3.866	-1.53	3.598	3.866	7.45	20.311	18.403	-9.39
BALANCE	Rs.	-229.531	-237.565	3.50	-166.905	-237.565	42.34	-1053.469	-1030.585	-2.17
	US\$	-2.197	-2.204	0.32	-1.640	-2.204	34.39	-10.402	-9.869	-5.12
Exports as % of Imports		44.0	43.0		54.4	43.0		48.8	46.4	



Average Exchange rate			
Months	Year	Exchange Rate	
Nov	2014	1 US\$=Rs. =	101.79
July-Nov	2014-15	1 US\$=Rs. =	101.17
Nov	2015 *	1 US\$=Rs. =	105.37
July-Nov	2015-16	1 US\$=Rs. =	103.71

Source: Pakistan Bureau of Statistics
 * Provisional

(Signature)
M. Afzal Raza
 Assistant Chief (Statistics)

22 - 12- 2015

- 1 P.S. to Minister for Commerce
- 2 PRO to Minister for Commerce
- 3 S.O. to Secretary Commerce
- 4 S.P.S. to Secretary Commerce
- 5 P.S. to Additional Secretary-I
- 6 P.S. to Additional Secretary-II
- 7 PS to Executive Director General (Domestic Commerce)
- 8 PS to Director General, PITAD
- 9 Chief (Dev. Wing)
- 10 J.S (Exports/Imports), J.S (WTO), J.S (FT-I), JS (FT-II), JS (FT-III)
- 11 Director General (Domestic Commerce), Director (Trade in Services),
- 12 DG (T.P)
- 13 Deputy Chief (Dev. Wing)
- 14 Incharge, Computer Section